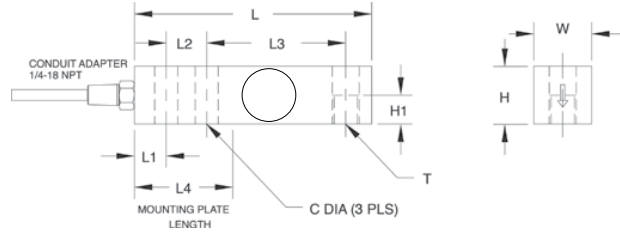


RL35083 Single-Ended Beam, Stainless Steel, Welded-seal, IP67



Picture is a representation of actual product



SPECIFICATIONS

Full Scale Output:
3.0 mV/V

Output Resistance:
349-355 ohms

Input Resistance:
343-357 ohms

Material/Finish:
Stainless steel

Temperature:
Compensated range
0°F to 150°F/-18°C to 65°C

Safe Overload:
150% Full scale

Safe Sideload:
100% Full scale

Rated Excitation:
10V DC (15V maximum)

Combined Error:
0.03% Full scale

Non-Repeatability:
0.01% Full scale

Insulation Resistance:
5000 megohms

Deflection at Capacity:

- 1000 lb=.013 in/.33 mm,
- 2500 lb=.015 in/.38 mm,
- 4000-5000 lb=.025 in/.64 mm,
- 10,000 lb=.032 in/.81 mm

Seal Type:
Welded-seal strain gauge*, IP67

Cable Length:
20 ft/6.1 m

Cable Diameter:
.220 PTFE coated cable

Conduit Adapter Size:
1/4-18NPT

Cable Color Code:

- Red..... + Excitation
- Black..... - Excitation
- Green..... + Signal
- White..... - Signal

Warranty:
Two-year limited warranty

Approvals:



DIMENSIONS

RATED CAPACITY	C	H	H1	L	L1	L2	L3	L4	T	W
lb/inches										
1000-4000	.53	1.22	.61	5.12	.62	1.00	3.00	2.25	1/2-20 UNF-2B	1.22
5000-10,000	.78	1.50	.75	6.75	.75	1.50	3.75	3.00	3/4-16 UNF-2B	1.50
kg/mm										
453.6-1814.4	13.5	31.0	15.5	130.0	15.7	25.4	76.2	57.2	1/2-20 UNF-2B	31.0
2268.0-4535.9	19.8	38.1	19.1	171.5	19.1	38.1	95.3	76.2	3/4-16 UNF-2B	38.1

ORDER INFORMATION

LOAD RATING	PART #	PRICE
1000 lb (453.6 kg)	17252	Consult
2500 lb (1134.0 kg)	17253	Consult
4000 lb (1814.4 kg)	17254	Consult
5000 lb (2268.0 kg)	17255	Consult
10,000 lb (4535.9 kg)	17256	Consult

*Conduit is recommended for maximum protection against the ingress of water and moisture through the cable entry

INTERCHANGEABLE PRODUCTS

MANUFACTURER	MODEL	PAGE #
VPG Sensortronics	65083	306
VPG Celtron	SQB-HSS	195

WEIGH MODULE AVAILABLE

MANUFACTURER	MODEL	PAGE #
Rice Lake Weighing Systems	RL50210	136
Rice Lake Weighing Systems	RL1800 Series	56

RICE LAKE WEIGHING SYSTEMS

